

## Racer Gauge <sup>Style 98</sup> ANTI-FLASH

SI Series

Racer Gauge Style98 Hommage 60mm (2 3/8")

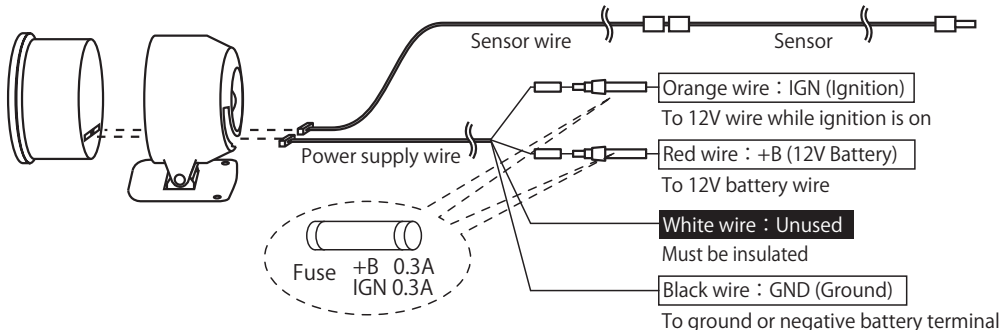
DF16604~DF16605、DF16804~DF16805、DF16904~DF16905

### ⚠ Caution

Insulate the white wire in the power source wire without wiring it.

The lighting of this product is always on regardless of whether the vehicle illumination is turned on or off.

If you connect the white wire, the illumination of this product will not light up properly.



# Racer Gauge Style 98

SI Series

Racer Gauge Style98 Hommage 60mm (2 3/8")

DF16604~DF16605, DF16804~DF16805, DF16904~DF16905

Thank you very much for purchasing our product.

This product is an additional product for providing information to automobile users about engine conditions and other important factors. Before installing and using the product, please read this manual and the warranty card thoroughly. All sections are for customers and installation personnels. After installation, please keep this manual and the warranty card for future reference. In the event that this product (or the vehicle in which it is installed) is lent to or transferred to another person, please be sure this operation manual and warranty card accompany the product.

Defi will not be held responsible for accidents or damages related to installation of this product.

When installing and operating this product, be sure to read the cautionary items in the operation manual for the vehicle in which this product will be installed in addition to the manual of this product. Please obtain a full understanding of the cautionary items and use the product accordingly. Before using the product, please confirm all the components are included in the package.

## Safety Warning [Please read carefully.]

In this manual, the degree of hazard arising from actions such as improper operation is separated into the 3 levels "Danger," "Warning," and "Caution." In addition, instructions that must be followed for safe and proper use of this product as well as practices that must be maintained are marked with a "Confirmation" heading. Please read and become familiar with these sections.

	<b>Danger</b>	Indicates the imminent dangerous situation of death or serious injury if the product is mishandled.
	<b>Warning</b>	Indicates the possibility of death or serious injury if the product is mishandled.
	<b>Caution</b>	Indicates a conceivable source of personal injury or damage to equipment if the product is improperly operated.
	<b>Confirmation</b>	Indicates an instruction that must be performed or practice that must be maintained.

Properties for safety warning

		Indicates attention needs to be paid. (Including warnings)
		Indicates restricted actions. (PROHIBITED actions)
		Indicates actions that need to be carried out. (MUST actions)

### Before handling (for installation personnel)

**⚠ Danger**

- Do not install the product at the wet places. It may result in a fire caused by an electrical short circuit.
- Ensure that the vehicle will remain stationary and turn off the engine before installing this product. Failure to do so could result in a fire, and could make the vehicle move during installation.
- Remove the key from the ignition and disconnect the negative (-) battery terminal prior to installation of this product. Failure to do so could result in a fire caused by an electrical short circuit.
- Take care not to install this product in a way that interferes with safety equipment such as seat belts and air bag systems or vehicle operation equipment such as engine controls, steering wheel or brake systems. Interference with normal operation of the vehicle can result in an accident or fire.
- Solder or use a solderless connector for wiring connections and make sure connections are insulated. In areas where there could be tension or sudden impacts on the wiring, safeguard the wiring with corrugated tubing or other shock absorbent material. Accidental shorts can cause fires.
- When wiring power supply wire, to avoid the risk of electrical shock or fire, be sure to confirm that there is no disconnection or breakage of wire. Poor connection can result in short-circuit, electrical shock, fire, or other hazards.
- Discontinue use of this product if a blowout of the fuse has occurred. Continued use while the condition exists could result in an accident, fire, or damage to the vehicle.
- Use a fuse of regulated capacity when the fuse of the power wire is changed. Using a fuse that exceeds regulated capacity may cause fire and affect the accuracy.
- Discontinue use of this product if the product doesn't operate or operates improperly. Continued use while the condition exists could result in an accident or fire.

**⚠ Warning**

- Do not disassemble or modify this product. Such actions will not only void the warranty but also damage or destroy the product.
- Do not perform installation of this product immediately after the engine has been switched off. The engine and exhaust system are extremely hot at this time and can cause burns if touched.
- Do not cut more than one wire at the same time when cutting wires. Cutting several wires together may destroy your ECU, ignition system and other engine management devices.
- Do not install this product in the area where safety equipment such as airbags are mounted. This may cause more injuries in the event of an accident. Carefully consider the installation location and driver's operation of the product before installation. Do not install this product where it interrupts driving and the safety devices of vehicle such as the airbag system.
- Be sure not to install this product where it could fall. Improper installation or operation could cause the product to fall and damage the vehicle or cause serious danger by impeding driving.
- Ensure that the wiring of this product does not have an adverse impact on the other wiring of the vehicle. Any controlling devices or other electronic components of the vehicle could be damaged.
- Keep children and infants away from the installation area. Children may swallow small parts or be injured in other ways.

**⚠ Caution**

- Do not drop any of the components of this product. It may result in damage to the product.
- Do not apply excessive force on switches/terminals. It may result in damage to the product.
- Do not use wires other than the provided wires.
- Do not place wires near the engine, exhaust pipe or turbine. It may result in damage or fusion of wires.
- Do not share single fuse with multiple gauges. Every gauge requires independent fuse for IGN and +B line.
- Do not pull the wires out of connectors forcefully. The connectors may be broken and the wires may be cut. When pulling out the wires, press the lock firmly and unclip the locks of connectors.
- Do not install gauges into the passenger side or center of the dashboard. It doesn't meet vehicle safety standards.
- Do not attach wires on the body of the vehicle or engine parts as this may result in damage to the product.
- Install wires away from ignition and also radio signal frequency interference as this could cause the gauges to malfunction.
- This product is designed for use on 12V vehicles. Do not install this product on vehicles with 24V systems.
- Insulate any unused wires. If any wires or connectors loosen during installation, please make sure they are correctly reattached.
- Make sure the waterproof processing is done when diverging wires in the engine compartment.
- When installing the sensor, do not bend the wire near the sensor body.
- Wear gloves to avoid burns when soldering and cuts when installing wires, sharp edges of parts.
- Install sensors away from hot or wet places.
- When using sunshade, put sunshade between products and windshield to avoid direct sun exposure.
- Use a dry, soft cloth for cleanup. Do not use cleaners except for neutral detergent. It may damage the product.

**Confirmation**

- Do not lay the gauge face down due to oil leakage. Angle "A" must be more than 90 degrees.
- Be sure to follow all instructions in this manual to ensure safe installation and operation of the product.
- After installation is complete, return this operation manual, warranty card, and the package to the customer along with the warranty.
- Confirm with the car maintenance manual issued by the manufacturer when installing and detaching genuine parts.
- Before tapping wires, check the voltage of the existing wire. After tapping the wire, check the voltage of the tapped wire again to confirm whether you have tapped into the proper place.
- If car navigation system or car television is installed in vehicle, gauges and wires of this product need to be kept as far away as possible from the wiring and installing positions of car navigation system or car television. Failure to do so may result in interference of television display.
- When the negative (-) battery terminal is disconnected, equipment such as clocks and audio components having internal memory may lose their memory data. Follow the operation manual of each component to reset data after installation of this product.
- The gauge pointer may not be in the proper position when you purchase the product. Normal function will resume when power is connected.
- On no event will Nippon Seiki Co., Ltd. be liable to you for any damages or losses of genuine parts for your vehicle while installing.

### About Installation and Operation(for customer and installation personnel)

**⚠ Warning**

- Do not disassemble or modify this product. Such actions will not only void the warranty but also damage or destroy the product.
- Do not operate during driving.
- Discontinue use of this product if the gauge doesn't operate, water gets into the unit, or smoke or a strange odor comes from the unit. If such a condition occurs, contact the sales outlet or installation personnel as soon as possible. Continued use while the condition exists could result in an accident or fire.
- Please have this product installed by a retail store or dealer where it was purchased. Installation by the customer will void the warranty.
- In order to ensure safe driving, check the information on the gauge only for short periods of time. Looking at the display for long periods of time could distract adequate attention from the road and result in an accident.
- Fix the switch unit and other parts tightly to the vehicle to avoid that children swallow those.

**⚠ Caution**

- Do not pull the wires out of connectors forcefully. The connectors may be broken and the wires may be cut. When pulling out the wires, press the lock firmly and unclip the locks of connectors.
- On no event will Nippon Seiki Co., Ltd. be liable to you for any damages arising out of the use or inability to use the product, even if Nippon Seiki Co., Ltd. has been advised of the possibility of such damage.

**Confirmation**

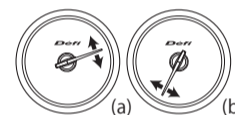
- This product cannot be linked to either the ADVANCE System or the Defi-Link System.
- The information displayed on this product are for reference purposes only. Please drive according to the indication of vehicle's originally equipped instruments.
- Please check the installed product regularly. Durability might deteriorate according to use conditions, etc.
- Dispose of the product according to the local recycling regulations.
- This product uses high luminance LEDs. When several gauges are lined up, there might be color difference in the LED production tolerance, but it is not malfunction.
- In the case of idling stop vehicles, the power of the product is turned off and restarted in some cases by a drop in battery voltage when the engine is restarted while idling stop function is active. It is not malfunction.

### Lineup (for customer)

Product Name	Display Range	Φ60mm	
		Black dial	White dial
TURBO 2.0	-100kPa~+200kPa	DF16604	DF16605
PRESS.	0~1000kPa	DF16804	DF16805
TEMP.	30~150°C	DF16904	DF16905

### Main Features (for customer)

- Stepping motor "STEP MASTER VS-2" provides smooth operation.
- Full 270° sweep dial provides ultimate visibility.
- The lights are produced from super high bright LEDs.
- Bright transparent gauge dials and needle pointers are used in the gauges to increase visibility at day and night. The backlight is always on.
- Illumination using high-brightness LEDs
- Lightning-like opening / closing ceremony
- A mounting bracket and instrument case is provided with the product.
- Self-diagnostic function monitors both sensor disconnection and short-circuiting during opening ceremony.
  - Sensor disconnection check  
This function reports any in-proper connections, broken or disconnected sensor or sensor wire. The pointer will wave between 250 and 260 degrees.
  - Short-circuiting check  
This function indicates any short circuit on the sensor or sensor wire. The pointer will wave between 10 and 20 degrees.



### Product Specifications (for customer and installation personnel)

- Power-supply voltage 10V to 15V DC (12V vehicles only)
- Current consumption +B line: MAX 120mA (Dark current 0mA)  
IGN line: MAX 120mA
- Temperature range (humidity is assumed to be 80% or lower) Unit: °C(°F)
 

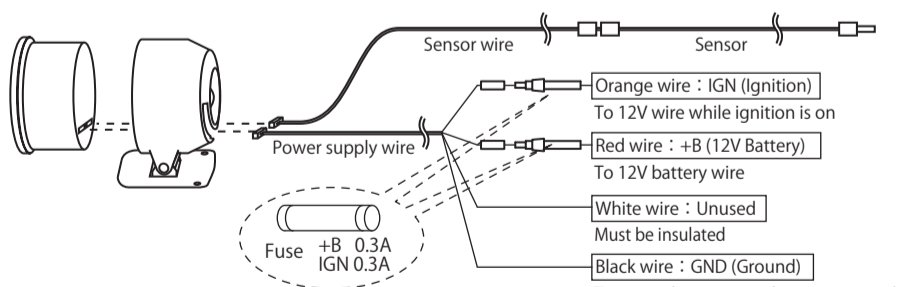
Gauge	Temperature range for storage	Temperature range for operation
Boost sensor	-30 (-22) ~ +80(176)	-20(-4) ~ +60(140)
Pressure sensor	-30 (-22) ~ +100(212)	-30 (-22) ~ +80(176)
Temperature sensor	-30 (-22) ~ +140(284)	-30 (-22) ~ +120(248)
Temperature sensor	-30 (-22) ~ +150(302)	-20 (-4) ~ +150(302)

 ※The upper temperature limit of sensor connectors is 105°C (221°F).
- Dial /illumination color Black dial/Green illumination  
White dial/Blue-green illumination

### Installation (for customer and installation personnel)

#### How to wire the power supply wire

- Disconnect negative (-) battery cable.
- Connect the power supply wire as shown below.
- Connect each sensor. Refer to "How to attach sensor" sections.
- Connect the sensor wire.
- Reconnect negative (-) battery cable.



**⚠ Caution**

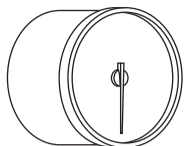
- Be sure to insulate the white wire.

**Confirmation**

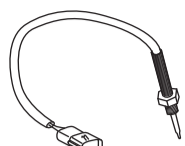
- When several gauges are installed into a vehicle, use each power supply wire to connect gauges to the vehicle independently. Do not join multiple power supply wires. Do not share single fuse with multiple gauges. Every gauge requires independent fuse for IGN and +B lines.

# TEMP.

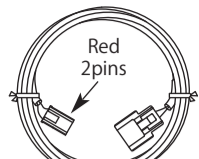
## Components



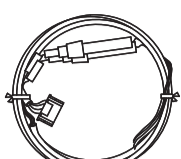
Gauge 1pc



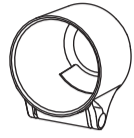
Temperature sensor (1/8PT) 1pc



Sensor wire (3m, 10ft) 1pc



Power supply wire (1m, 3 1/3ft) 1pc



Meter cup 1pc

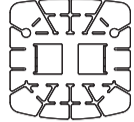
### Mounting bracket set



Double sided tape (large) 1pc



Buffer 1pc



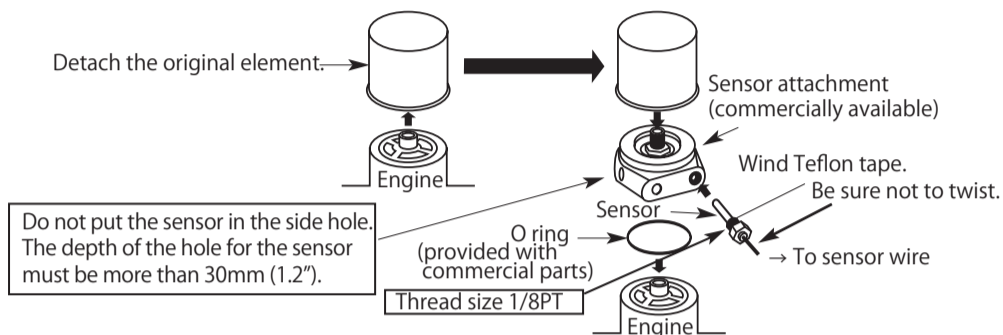
Mounting bracket 1pc



M4 bolt, nut, washer 1pc

Start guide and warranty card are included other than the parts listed above. Keep them at hand.

## How to attach temperature sensor for oil temperature (Use a commercial sensor attachment.)



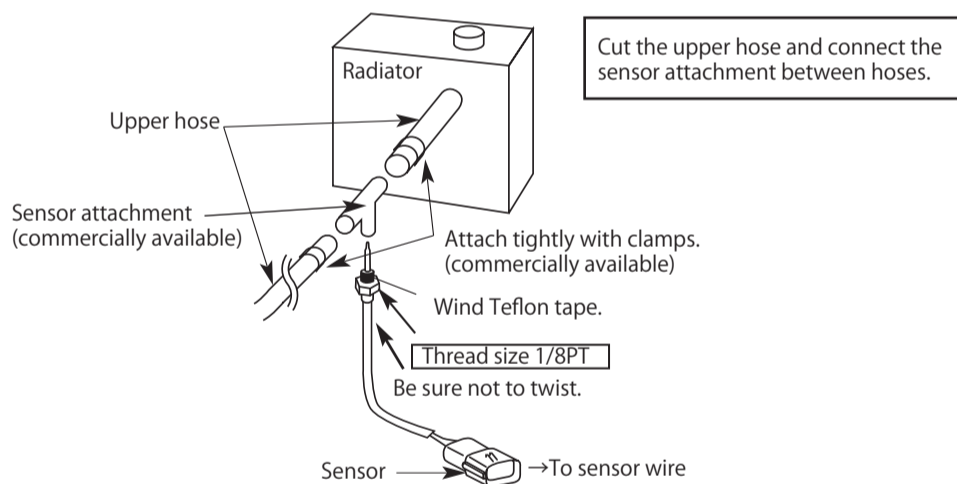
### Warning

- Be sure the sensor wire is not twisted when installing the sensor. The sensor wire will be cut.
- Oil spills by the installation work. Please replenish the engine with oil. The engine might overheat when oil is too little.
- To avoid oil leaks by installing of the sensors, use Teflon tape. Before driving, inspect oil blocks for leaks. Leaks could cause a fire or damage the engine.
- To avoid the damage of the sensor wire, please fix the waterproof connector on the vehicle body and do not bend the sensor wire near the sensor.

### Confirmation

- The thread size of the temperature sensor is 1/8PT. Use a sensor attachment of 1/8PT. If the thread size of the sensor attachment for the temperature sensor is not 1/8PT, and you use a conversion adapter available from hardware store, note that the temperature is displayed lower than the actual value.
- The depth of the hole for the sensor must be more than 30mm (1.2").
- Tighten the sensor into the sensor attachment and then connect it to the sensor wire.

## How to attach temperature sensor for water temperature (Use a commercial sensor attachment.)



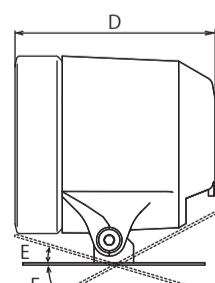
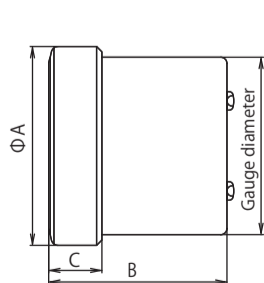
### Warning

- Be sure the sensor wire is not twisted when installing the sensor. The sensor wire will be cut.
- Coolant spills by the installation work. Please replenish the engine with coolant and bleed the air from the system, or the engine might overheat.
- To avoid water leaks during installation of the sensors, use Teflon tape. Attach the sensor attachment and upper hose with clamps. Inspect hose connections for leaks before driving.
- To avoid the damage of the sensor wire, please fix the waterproof connector on the vehicle body and do not bend the sensor wire near the sensor.

### Confirmation

- The thread size of the temperature sensor is 1/8PT. Use a sensor attachment of 1/8PT. If the thread size of the sensor attachment for the temperature sensor is not 1/8PT, and you use a conversion adapter available from hardware store, note that the temperature is displayed lower than the actual value.
- Tighten the sensor into the sensor attachment and then connect it to the sensor wire.

## Dimensions in mm (1mm=0.039in)



	Gauge diameter
	Φ60
A	66.3
B	52.2
C	15.5
D	65.9
E	15°
F	32°

## Repair Parts (for customer)

Item	Part number
Fuse 0.3A (2pcs)	PDF06508G
Mounting Bracket set for Φ52 & 60mm gauge	PDF07809G
Power Supply wire	PDF06504H
Boost Sensor (for 200kPa/30PSI)	PDF06503S
Boost Sensor wire	PDF06505H
Pressure Sensor (1/8PT)	PDF00703S
Pressure Sensor wire	PDF06603H
Temp. Sensor (1/8PT)	PDF00903S
Temp. Sensor wire	PDF05602H

## Optional Parts (for customer)

Item	Part number
Boost Sensor extension wire 1m(3 1/3ft.)	PDF06002H
Pressure Sensor extension wire 2m(6 3/5ft.)	PDF00707H
Temp. Sensor extension wire 2m(6 3/5ft.)	PDF00906H

## Troubleshooting (for customer and installation personnel)

### Warning

- If any indications of troubles are found in the product, stop the engine and check the product, wiring, and the vehicle right away. Continued use without checking could result in a serious accident. If any trouble is found while using, setting, and operating, ask the store where this product was installed or purchased to check the trouble. Inspection by a customer could result in accidents or malfunction.

Condition	Possible Cause	Corrective Action
○ A gauge lapses into the disconnection check mode. (Except VOLT gauge)	○ Disconnection of sensor or sensor wire ○ Connector is unhooked. ○ Incorrect wiring	○ Check the disconnection of connectors and wires.
○ A gauge lapses into the short circuit check mode. (Except VOLT gauge)	○ Sensor or sensor wire has a short circuit. ○ Sensor or sensor wire is shorted to the vehicle body.	○ Look for the point of short circuit with the following procedures. [Step 1] Unplug the sensor from sensor wire. <1> The gauge lapses into the disconnection check mode. → Short circuit of the sensor. <2> The short circuit check mode continues. → Go to [Step 2] [Step 2] Unplug the sensor wire from the gauge. <1> The gauge lapses into the disconnection check mode. → Sensor wire has a short circuit.
○ A gauge doesn't operate.	○ Fuse on the power supply wire is blown out.	○ Check the wiring. ○ Do not share single fuse with multiple gauges. Every gauge requires independent fuse for IGN and +B line.
○ A gauge doesn't perform the opening mode.	○ Wiring of IGN wire or GND wire of the power supply wire to the vehicle is wrong. ○ Fuse on the IGN wire of the power supply wire is blown out.	○ Check the wiring. ○ Replace the fuse of the power supply wire.
○ A gauge doesn't perform the closing mode.	○ Wiring of constant battery+ wire of the power supply wire to the vehicle is wrong. ○ Fuse on the constant battery+ wire of the power supply wire is blown out.	○ Check the wiring. ○ Replace the fuse of the power supply wire.
○ Night illumination is too dark.	○ The white wire in the power source wire is connected.	○ Do not connect the white wire anywhere and Insulate it.
○ Malfunctioning operation	○ Wrong wiring of the power supply wire	○ Check the wiring.

## Maintenance & Check / Warranty & Servicing

### Warranty card - Terms and conditions

This product is delivered with this operation manual and a warranty card. Please read terms and conditions in this manual thoroughly and keep the warranty card in a safe place. Failure to show this warranty will void the warranty.

### Warranty period

Limited one year warranty. The warranty period starts at the date of retail purchase by the original end-user purchase. Please confirm the warranty card is provided with the information of retail store where purchased. Please refer to Limited Warranty for details.

### Caution

- Except in the case of defects, we shall not be liable for any trouble including violation, accident or improper wiring resulting from using this product.
- The warranty does not cover any unauthorized repair performed or caused to be performed by the end user. Such action can destroy or damage this product.

### Inspection

Please ask the shop you purchased the product for inspection if any defect in product is suspected. We don't accept the order of fixing because Defi products require installation and wiring to the vehicle. In case you cannot go to the shop you purchased because of move-out or closure of shop, please ask the nearest Defi Distributor listed on the Defi website.

- For a repair/inspection service, take the warranty card and customer contact information with you.

Please conduct periodic inspections by Defi through a shop which sells Defi products or Defi's official distributor every five years. Inspection is available at an additional cost. In the case you purchase used products or used vehicles with products of Defi, Please have an inspection by Defi as well before using them.

### Label

The label stucked on the product is for the product traceability. Do not peel it off.

### Discarding the products

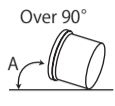
Please dispose products in accordance with disposal laws, state laws and local government. A recycle label on the package indicates that the package is recyclable.

### How to attach Mounting bracket set

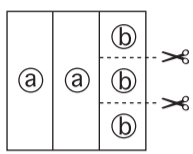
- 1) Cut the double sided tape as shown in figure 1.
- 2) Insert convex part of the mounting bracket over the legs of the meter cup. Attach the mounting bracket to the meter cup with the bolt, nut, and washer included in the kit as shown in figure 2.
- 3) Attach one piece of double sided tape and the buffer on the gauge as shown in figure 3.
- 4) Pass the power supply wire and the sensor wire through the hole of the meter cup and connect them to the gauge.
- 5) Place the gauge in the meter cup making sure that the wires are not sandwiched.
- 6) Attach double sided tape on the back of the mounting bracket as shown in figure 4. Bend the mounting bracket to conform to the structure of the location where you intend to attach it.
- 7) Fix the mounting bracket with commercial tapping screws as shown in figure 5.

### Confirmation

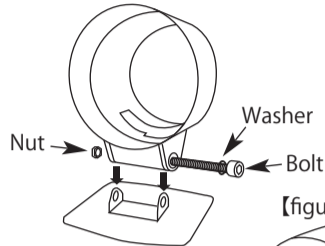
- Do not lay the gauge face down due to oil leakage. Angle "A" must be more than 90 degrees.
- Use appropriate dashboard cleaning liquids (commercially available) to clean the area where the double sided tape will be attached.
- Use commercial tapping screws with double sided tapes to fix gauges on dashboard.



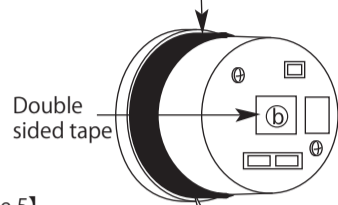
【figure 1】



【figure 2】

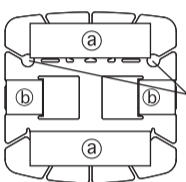


【figure 3】



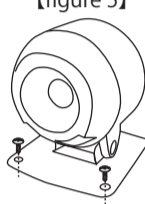
【figure 4】

Mounting bracket (rear side)

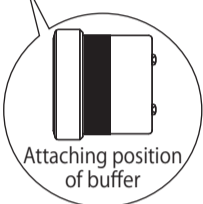


Holes for screws (Φ4.4mm)

【figure 5】

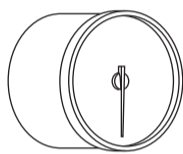


Use commercially available tapping screws.

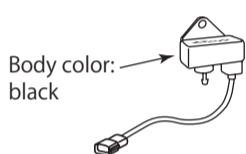


## TURBO

### Components

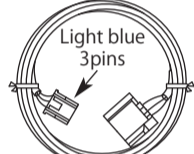


Gauge 1pc

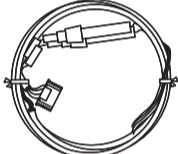


Body color: black

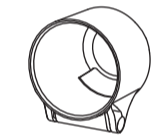
Boost sensor 1pc



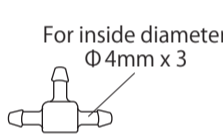
Sensor wire (2.5m, 8 1/5ft) 1pc



Power supply wire (1m, 3 1/3ft) 1pc



Meter cup 1pc



For inside diameter Φ4mm x 3

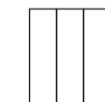
Three way joint 1pc



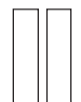
Inside diameter Φ4mm

Rubber hose 0.5m (1 3/5ft) 1pc

### Mounting bracket set



Double sided tape (large) 1pc



Buffer 1pc



Mounting bracket 1pc

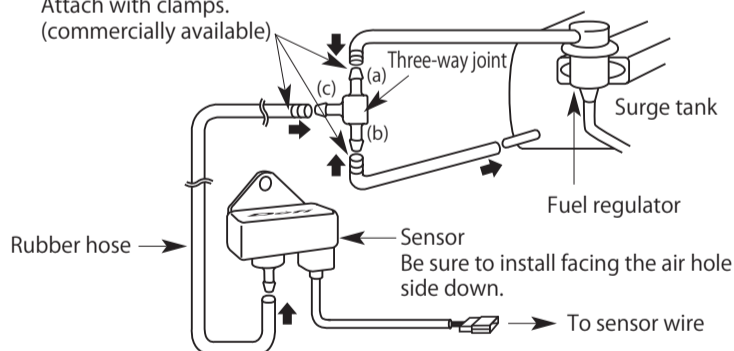


M4 bolt, nut, washer 1pc

- Start guide and warranty card are included other than the parts listed above. Keep them at hand.

### How to attach boost sensor (e.g. for gasoline vehicle)

Attach with clamps. (commercially available)



- 1) The rubber hose attached to the sensor should be as short as possible. Attach the sensor with bolts (M6) in the engine compartment in an area where it will not be subject to excess heat or vibration.
- 2) Access to the air pressure intake may be obtained between the surge tank and the fuel regulator.
  - (A) Detach the vacuum hose from the surge tank side that has less pressure oscillations and connect it to the point (a) or (b) of the three way joint.
  - (B) In order to connect the surge tank with three way joint, cut the required length of the hose from the included rubber hose.
  - (C) Use the remaining rubber hose to connect the sensor to the three way joint.

### Warning

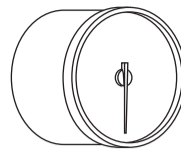
- To avoid disconnection of rubber hose and air leak, attach hose clamps or use tie-wraps to secure the adjacent hose in the engine compartment. Disconnected hose or air leak could cause damage to the engine.
- In the case that the gauge does not indicate correct intake pressure, shut off the engine immediately and stop using the product. Please recheck the wiring line. Air leaks or loose connections may happen, or the connected location may be wrong.

### Confirmation

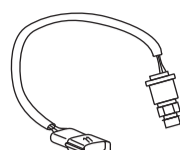
- The sensor must be installed being the rubber hose connection side faced down.
- For vehicles which have a solenoid valve between the surge tank and the fuel pressure regulator, place a three-way joint closer to the surge tank side than to the solenoid side.
- Depending on vehicle types, there are some cases that this product cannot be installed to a vehicle. Please ask retailers or distributors for details.
- The included three-way joint can be used only for the piping inner diameter of Φ4mm between the surge tank and fuel pressure regulator. In case of other than Φ4mm, use commercial joint that fits properly.

## PRESS.

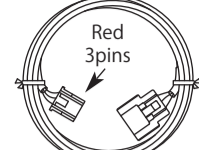
### Components



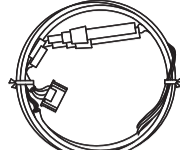
Gauge 1pc



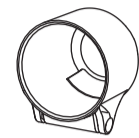
Pressure sensor (1/8PT) 1pc



Sensor wire (2.5m, 8 1/5ft) 1pc

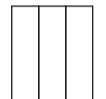


Power supply wire (1m, 3 1/3ft) 1pc



Meter cup 1pc

### Mounting bracket set



Double sided tape (large) 1pc



Buffer 1pc



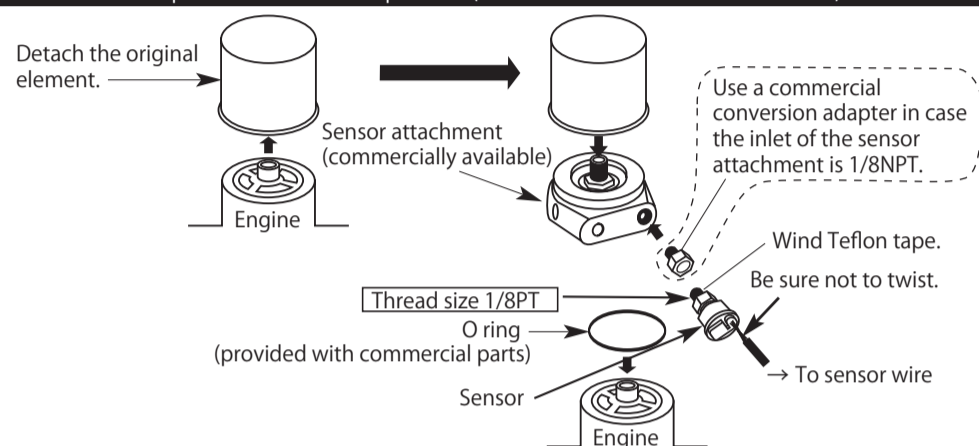
Mounting bracket 1pc



M4 bolt, nut, washer 1pc

- Start guide and warranty card are included other than the parts listed above. Keep them at hand.

### How to attach pressure sensor for oil pressure (Use a commercial sensor attachment.)



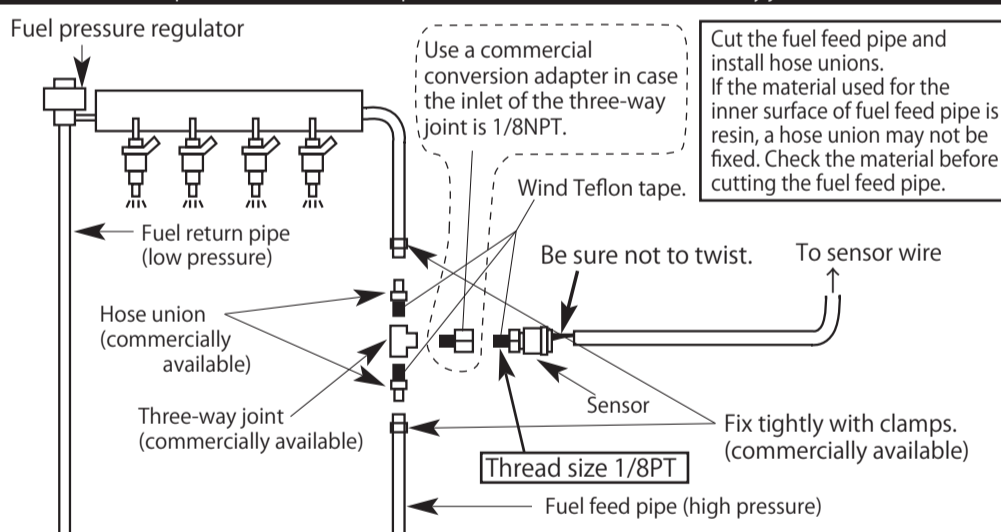
### Warning

- Do not install the sensor near oil pump. Do not install the sensor to pressure switch directly. Failure to do so could damage the sensor because the pressure pulsation is too big and exceed three times full-scale momentarily.
- Be sure the sensor wire is not twisted when installing the sensor. The sensor wire will be cut.
- Oil spills by the installation work. Please replenish the engine with oil. The engine might overheat when oil is too little.
- To avoid oil leaks by installing of the sensors, use Teflon tape. Before driving, inspect oil blocks for leaks. Leaks could cause a fire or damage the engine.
- To avoid the damage of the sensor wire, please fix the waterproof connector on the vehicle body and do not bend the sensor wire near the sensor.

### Confirmation

- The thread size of the pressure sensor is 1/8PT. Use a sensor attachment of 1/8PT. If the thread size of the sensor attachment for the pressure sensor is 1/8NPT, use a conversion adapter available from hardware stores.
- Tighten the sensor into the sensor attachment and then connect it to the sensor wire.

### How to attach pressure sensor for fuel pressure (Use a commercial three-way joint and hose unions.)



### Warning

- Be sure the sensor wire is not twisted when installing the sensor. The sensor wire will be cut.
- Before cutting the fuel feed pipe, be certain to remove the gas cap to relieve any pressure built up in the fuel tank.
- When cutting the fuel feed pipe, be certain to discharge static electricity. Otherwise, there is a possibility of the ignition in gasoline.
- Wear glasses to protect eyes when cutting the fuel filter pipe.
- To avoid fuel leaks during installation of the sensor, use Teflon tape. Attach hose connection and fuel feed tubing with clamps. Inspect pipes and hose connections for leaks before driving.
- To avoid the damage of the sensor wire, please fix the waterproof connector on the vehicle body and do not bend the sensor wire near the sensor.

### Confirmation

- The sensor must be installed on the feed (high pressure) pipe side between the fuel tank and the fuel pressure regulator. It is not possible to obtain accurate fuel pressure from the return (low pressure) side at the rear of the fuel pressure regulator.
- The thread size of hose unions and the three-way joint need to be 1/8PT. Use hose unions and a three-way joint of 1/8PT. If the thread size of the three-way joint is 1/8NPT, use a conversion adapter available from hardware stores.
- Tighten the sensor into the sensor attachment and then connect it to the sensor wire.

## Terms and Conditions (for customer)

### LIMITED PRODUCT WARRANTY AND LIMITED PRODUCT LIABILITY

#### A. Limited Warranty

- a. Our sole obligation to you after the sale of a product is to replace, without charge, the product or any component thereof discovered to be defective within a period of one (1) year from the purchasing date (the "Warranty Period"). You accept sole responsibility for the proper assembly operation and regular maintenance of the product. This limited warranty is void if any product is damaged by accident, misuse, improper installation, or abuse, including tampering or damage in transit. Further, this limited warranty is void if you sell or otherwise transfer a product to a third party, regardless of whether the transfer takes place within the Warranty Period.
- b. Our liability to you resulting from the sale of any product, including liability for any latent defects found within the Warranty Period, shall not exceed the total purchase price paid for the product by you.
- c. YOU UNDERSTAND AND AGREE THAT WE MAKE NO REPRESENTATIONS OR WARRANTIES OF ANY KIND, EXPRESS OR IMPLIED AS TO ANY MATTER WHATSOEVER, INCLUDING THE CONDITION OF THE PRODUCT OR ANY COMPONENT PARTS THEREOF, ITS MERCHANTABILITY OR ITS FITNESS FOR ANY PARTICULAR PURPOSE AND YOU ACCEPT IT, "AS IS," "WHERE IS."
- d. You also understand that we are not granting any express warranties, other than those stated herein. These include only those warranties enumerated in paragraph A. a. There are no other express warranties granted anywhere in these terms and conditions of sale, and you understand and agree to this fact as part of the bargained for exchange of this sale. Nowhere else, except as stated in this paragraph, in this contract is there intended, by either party, for there to be any express warranties granted to you.
- e. EXCEPT AS OTHERWISE PROVIDED HEREIN, WE SHALL NOT BE LIABLE FOR DAMAGES, INCLUDING SPECIAL, INCIDENTAL OR CONSEQUENTIAL DAMAGES WHETHER IN CONTRACT OR IN TORT ARISING OUT OF OR IN CONNECTION WITH THE PERFORMANCE OF ANY PRODUCT OR ANY COMPONENT PART THEREOF OR ITS USE BY YOU, AND WE SHALL NOT BE LIABLE FOR ANY SPECIAL, INCIDENTAL OR CONSEQUENTIAL DAMAGES ARISING OUT OF OR IN CONNECTION WITH YOUR USE OF THE PRODUCT.
- f. The warranty on this product is void if the product is modified, changed, adjusted or damaged. This product is to be used only in the ways for which it is designed and marketed for, any deviations from the intended uses will void the warranty and will excuse any possible liability of ours.
- g. You accept sole responsibility for the proper assembly, operation and regular maintenance of the product. This limited warranty is void if the product is damaged, changed, altered, or modified by accident, misuse, improper installation, or abuse, including tampering or damage in transit or while in use. YOU HAVE MADE AN INDEPENDENT INVESTIGATION OF THE PURCHASED COMPONENTS AND HAVE RELIED SOLELY ON YOUR OWN INVESTIGATION, BARGAINING AND JUDGMENT IN REFERENCE THERETO. YOU ACKNOWLEDGE THAT YOU ARE NOT RELYING ON OUR SKILL OR JUDGMENT TO SELECT OR FURNISH GOODS SUITABLE FOR ANY PARTICULAR PURPOSE IN PURCHASING OUR PRODUCTS, YOU HAVE NOT RELIED OR ACTED UPON ANY REPRESENTATIONS OR WARRANTIES ON OUR PART NOT SPECIFICALLY SET FORTH HEREIN.
- h. This limited warranty gives you specific legal rights. You may also have other rights which vary from state to state. Some states do not enforce contractual limitations on how long an implied warranty lasts, when an action may be brought, or the exclusion or limitation of incidental or consequential damages, so the above limitations or exclusions may not apply to you.

#### B. Modification Strictly Prohibited

You understand and agree that any modification whatsoever, of the product, is strictly prohibited. You also agree not to modify the product in any manner regardless of whether such modification is material or immaterial. You also acknowledge that any modification of the product will void your limited warranty and bar you from any recovery or any remedy in a court of law or equity. Modification is strictly forbidden unless expressly authorized by our prior written approval. You agree not to make any modifications to the product and agree not to use any parts, components, or accessories in connection with the installation and use of the product that are not authorized and approved by us.

#### C. Indemnity and Release

- a. You understand and agree that many factors beyond our control affect the operational safety of the product, including but not limited to the installation of the product according to the instructions provided with the product.
- b. You also understand and agree that the installation of the product may involve the use of tools, equipment and construction methods which may present safety hazards which are beyond our control. You also understand and agree that the use of some of our products may create hazards and lower your ability to control your vehicle.
- c. You agree, as part of the bargained for exchange, to protect, indemnify, save harmless and release us, our authorized agents, employees, officers, directors and shareholders from and against all liabilities, obligations, claims, damages, penalties, causes of action, costs and expenses, imposed upon or incurred by or asserted against us or any assignees of ours, by you or any third party by reason of the occurrence or existence (or alleged occurrence or existence) of any use, installation, assembly, possession or operation of the product, any loss, damage or destruction of the product as of and after delivery (a "casualty occurrence"), and any other act or event relating to or caused by the product, including but not limited to, consequential or of the terms and conditions hereof, or any and all liability for property loss or damage, or any and all damage resulting from death or personal injuries, including loss of services which any person may sustain on account of, arising out of, or in connection with any use, maintenance, possession or operation of the product. In the event that any action, suit or proceeding is brought against us or any of our authorized agents, employees, officers, directors or shareholders by reason of any such occurrence, you will, upon our request and at your expense, resist and defend such action, suit or proceeding or cause the same to be resisted and defended by counsel designated and approved by us.

---

Racer Gauge Style98 Hommage 60mm Operation Manual

■ Issue 3rd edition: March, 2024

■ Manufacturer Nippon Seiki Co., Ltd.

■ Contact Information Defi, Nippon Seiki Co., Ltd.

【Address】2-34 Higashi-Zaoh 2-chome, Nagaoka-shi, Niigata 940-8580 JAPAN

【URL】<https://www.defi-shop.com>

 **NIPPON SEIKI**

---