

# Defi Meter C Application User's Guide

## BEFORE INSTALLATION

### ① Download the App

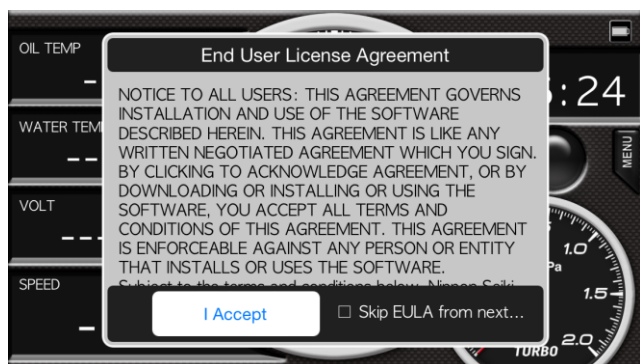
Search “Defi Meter C” application through App Store and download the App.

### ② Pairing your mobile device with the SMART ADAPTER W

Make sure that the active indicator blinks every second on the SMART ADAPTER W. Scan your device on your Bluetooth setting, and pairing your mobile device with the Defi SMART ADAPTER W. When the message with PIN code appears, touch “Pairing”. Please refer to your mobile device User's Guide about pairing.

## 【Connecting to the SMART ADAPTER W】

### ① Running “Defi Meter C” App, the “End User License Agreement” appears on the screen. When you agree to the End User License Agreement, touch “I ACCEPT”.



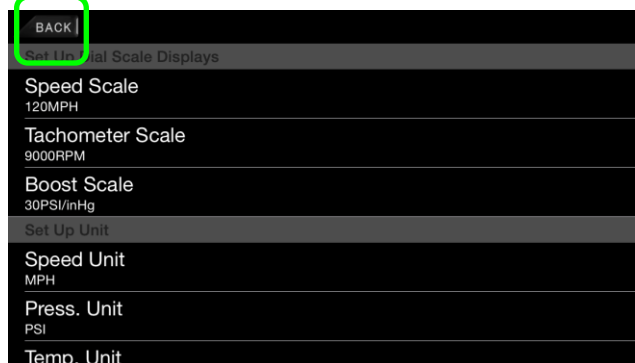
### ② Touch “MENU button” on the screen, and then the menu bar appears. Touching “Communication”, the connection to the SMART ADAPTER W will be completed. The connection icon will appear on the top left side of battery icon.



### ③ MENU button: at the middle right side on the screen



### BACK button: at the top left side on the screen



## 【Displays on the screen】

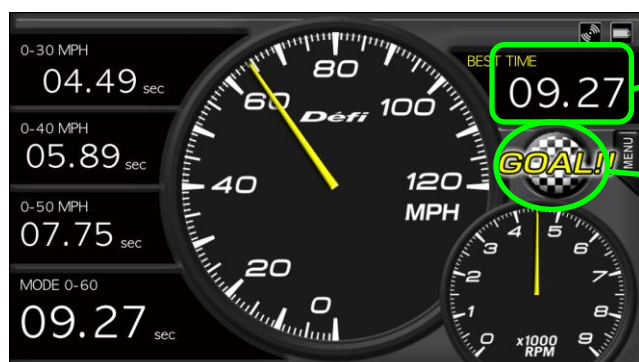
You can choose the mode (Gauge mode or Time Measurement mode) by swiping

### Gauge Mode



REV Indicator  
(Transmission Gear Position location )

### Time Measurement Mode



Best Time on Time Measurement Mode

State of measurement or  
REV Indicator  
(Transmission Gear Position location)

## 【Set Up Gauge Types】

Touching the item among the digital-gauge category on the left side of the screen, you can choose the gauge types that you want to display.

As for analog meter gauges, touching the center of gauges, you can choose the gauge types.

### • Selecting items

#### Connecting to ADVANCE

Speed, Tachometer, Turbo, IN-MF.P., Oil Pressure, Fuel Pressure, Oil Temperature, Water Temperature, Exhaust Temperature, Electric Pressure

#### Connecting to OBD II

Speed, Tachometer, Turbo, IN-MF.P., Fuel Pressure, Water Pressure, Electric Pressure, Throttle Opening, Intake Temperature

※ You can also select Blank (no display) on the digital number display category.

※ In the case of connecting to OBD II, gauge types that can be displayed on the screen depend on your vehicle model.  
Some gauges may not be displayed.

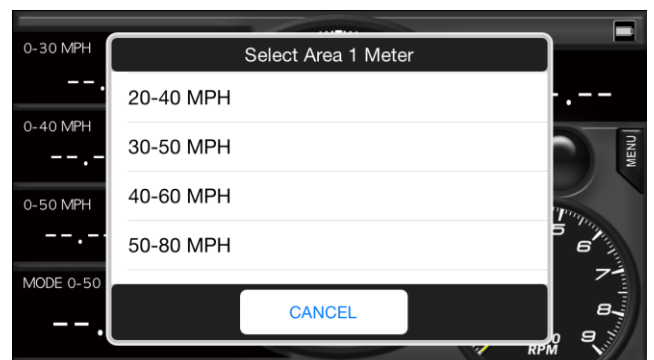
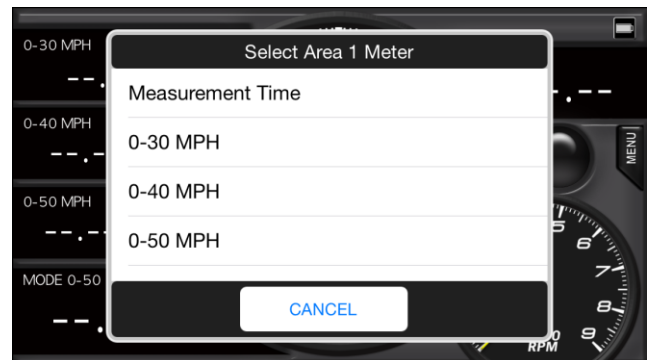
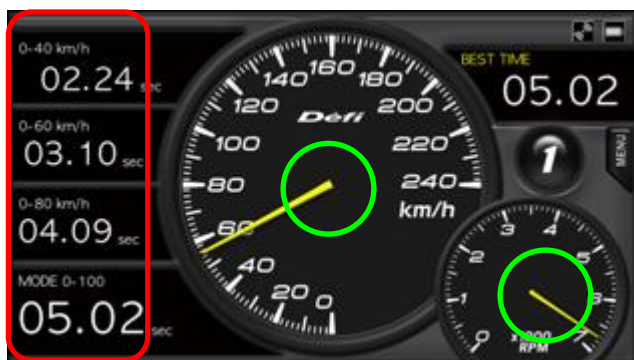
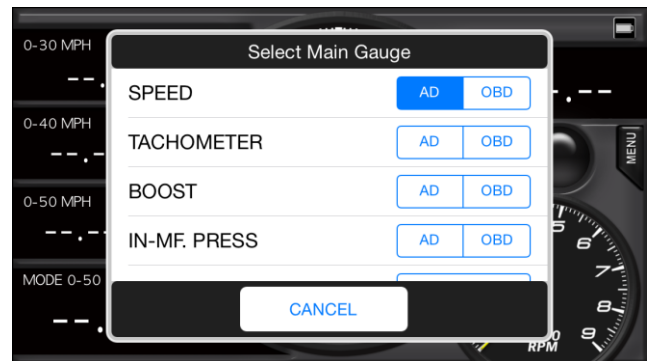
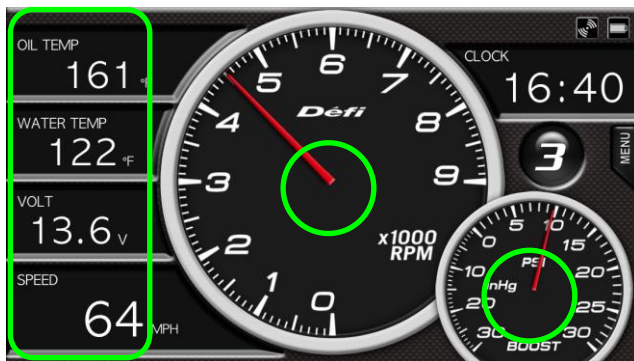
• You can select data either from the ADVANCE Control Unit or OBD II when connecting to both the Control Unit and OBDII.

### • Selecting items on Time Measurement Mode

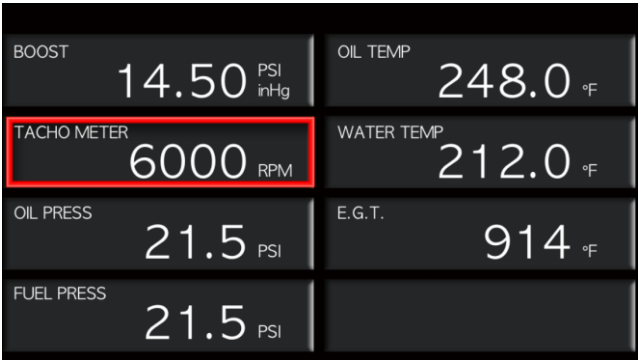
Time Value : the elapsed time from the start, the time at the goal

Section Time : 0-40km/h, 60km/h, 80km/h, 100km/h, 120km/h, 160km/h, 200km/h, 240km/h, 300km/h  
(0-30MPH, 40MPH, 50MPH, 60MPH, 80MPH, 100MPH, 120MPH, 160MPH, 200MPH)

Elapsed Time : 20-60km/h, 40-80km/h, 60-100km/h, 80-120km/h, 100-160km/h, 140-200km/h, 180-240km/h, 220-300km/h  
(20-40MPH, 30-50MPH, 40-60MPH, 50-80MPH, 60-100MPH, 80-120MPH, 100-140MPH, 120-200MPH)



【(ADVANCE Control Unit) Warning Settings】 Operation on ADVANCE Control Unit Switch  
SLIDE SWITCH position: SET  
WARN SET SWITCH: PRESS



If the value of each gauge exceeds your warning value on the digital gauge category, the displayed number turns red.  
When Tachometer value exceeds your warning value, the back wall of REV Indicator turns red.  
Please refer to the ADVANCE Control Unit Operation Manual about the details.  
When the setting is complete, return the slide switch position to “REAL”

【(ADVANCE Control Unit) System Settings】 Operation on ADVANCE Control Unit Switch  
SLIDE SWITCH position: SET  
WARN SET SWITCH: Long PRESS



Selecting an item by using “UP” or “DOWN” switch on the ADVANCE Control Unit Switch and pressing WARN SET, you can change setting items.  
When the setting is complete, return the slide switch position to “REAL”.

On the screen	Setting items	Default
UNIT	Units setting	※
SPEED PLUSES	Speed pulse setting	2,4,8,16, FREE
ENGINE CYLINDERS	Number of cylinders setting	1,2,3,4,5,6,8
TACHO RESPONSE	Tachometer response setting	HIGH, MID, LOW
DIMMER	Dimmer setting	※
SPECIAL MODE	Special display setting	※
WARM UP MODE	Warm-up setting	※
CLOCK	Clock setting	※

※These setting items can be changed only on the ADVANCE ZD.

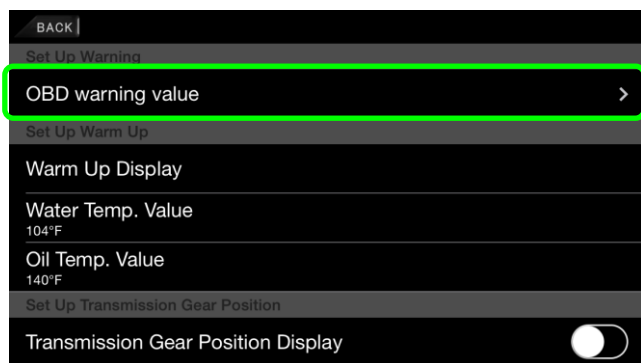
- Set Up Speed Pulse  
Depending on vehicle specifications, you need to set Speed pulse. 4 pulse setting is usual except Nissan vehicles. If you don't know your vehicle's pulse or want to revise it, select “FREE”, and then press the “WARN SET” button on the Control Unit during driving, when your built-in speed meter indicates 60km/h. By doing so, a new value is set correctly

- Set Up Number of Cylinders  
Select number of cylinders.  
(When you set an ignition signal, it is better to select 1 cylinder or 2 cylinders. This will give more accurate readings)
- Set Up Tachometer Response  
You can set the Tachometer response. When you select “HIGH”, response speed is faster. When you select “LOW”, response speed is slower.  
Check the actual response, and then choose the preferable one.

【Set UP OBDII Warning Value】 Touch the MENU button on the screen→“Settings”→

When connecting to OBD II system, “Set up OBD warning value” is available.

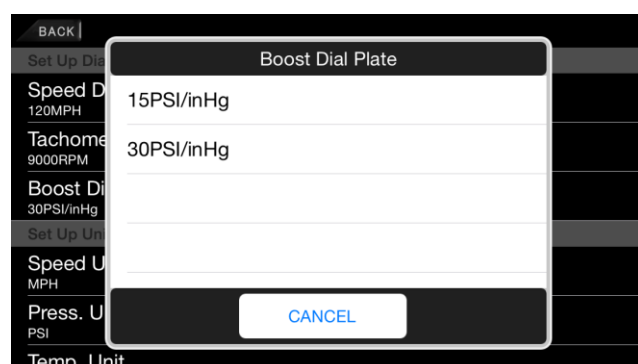
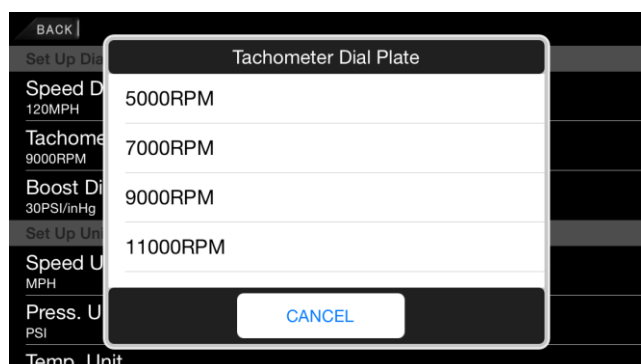
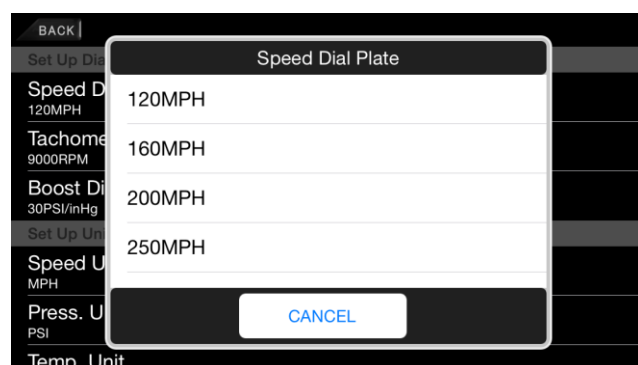
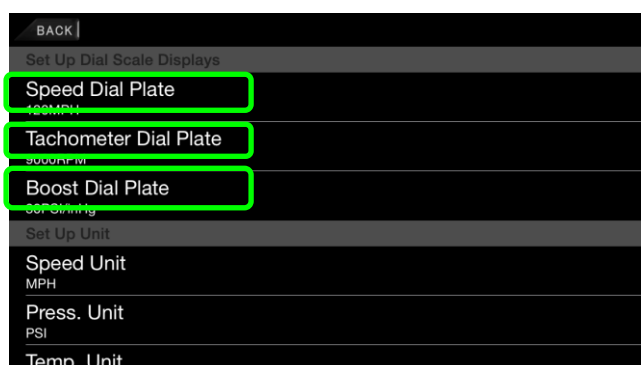
『TACHOMETER』	: Set up Warning Value of engine revolutions	0 ~ 11,000rpm
『TURBO/IN-MANI』	: Set up Warning Value of intake pressure	-100 ~ 200kPa (-14.5 ~ 29PSI)
『FUEL PRESS』	: Set up Warning Value of fuel pressure	0 ~ 600kPa (0 ~ 87PSI)
『WATER TEMP』	: Set up Warning Value of water temperature	0 ~ 150°C (32 ~ 302° F)
『THROTTLE』	: Set up Warning Value of throttle opening	0 ~ 100%



【Set Up Dial Scale Displays】 Touch the MENU button on the screen→“Settings”→



『Speed Dial Plate』	: Select full scale	180/240/ 300/ 400km/h (120MPH/160MPH/200MPH/250MPH)
『Tachometer Dial Plate』	: Select full scale	5,000/7,000/9,000/11,000rpm
『Boost Dial Plate』	: Select full scale	200kPa 120kPa (15PSI/30PSI)



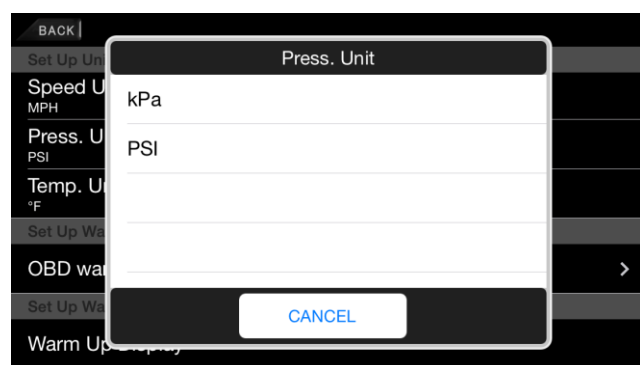
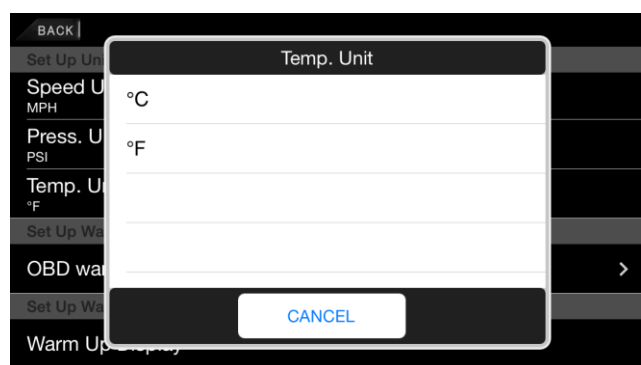
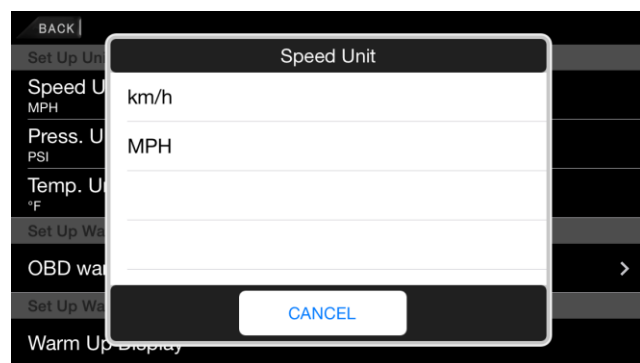
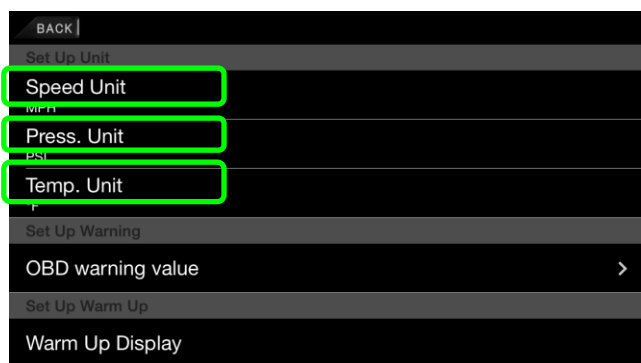


【Set Up Units Speed/Pressure/Temperature】 Touch the Menu Key on your Android device→“Settings”→

『Speed Unit』 : Select between km/h and MPH

『Pressure Unit』 : Select between kPa and PSI

『Temperature Unit』 : Select between °C and ° F

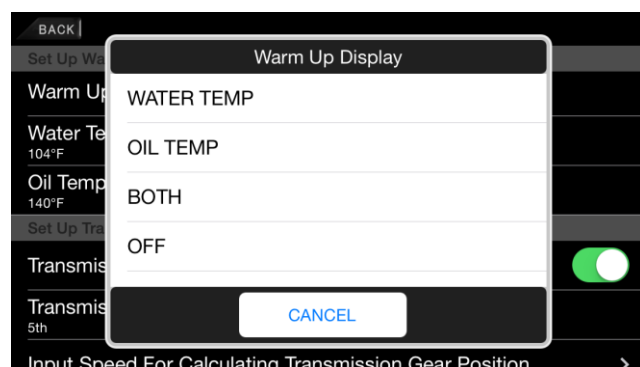
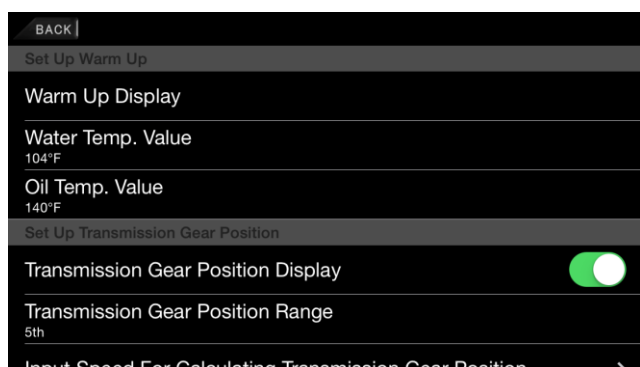


【Set Up Warm up】 Touch the MENU button on the screen→“Settings”→

『Mode of Warm Up』 : Select one from Water Temperature, Oil Temperature, Water &Oil Temperature, and Off.  
Dial plate's color on the selected gauges is blue during warming up. The gauge turns white when it reaches your set temperature.

『Water temperature default』 : 0~150°C (32 ~ 302° F)

『Oil temperature default』 : 0~150°C (32 ~ 302° F)



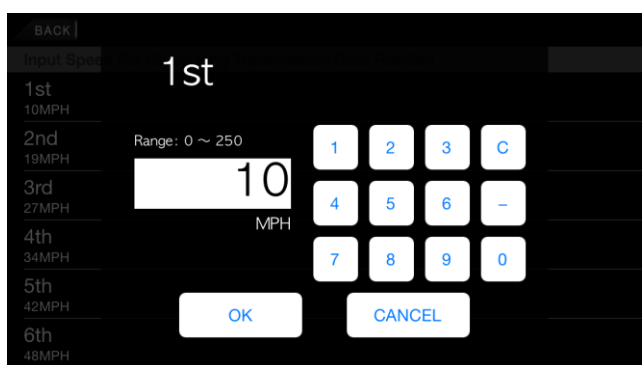
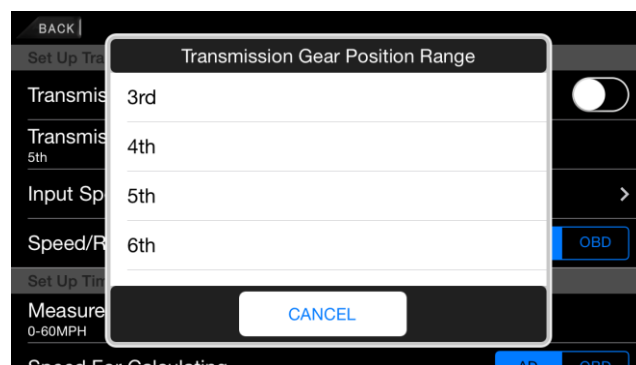
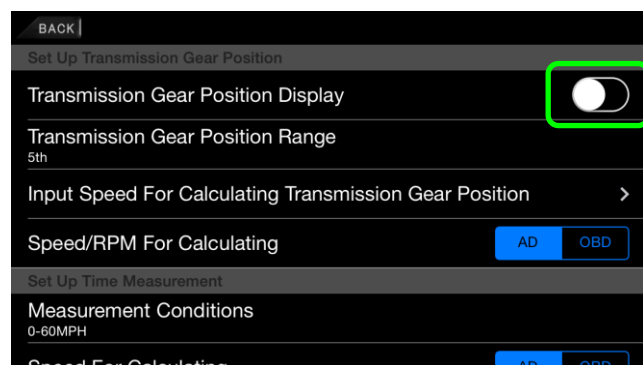
Warm-Up Display



【Set Up Transmission Gear Position】 Touch the MENU button on the screen→“Settings”→

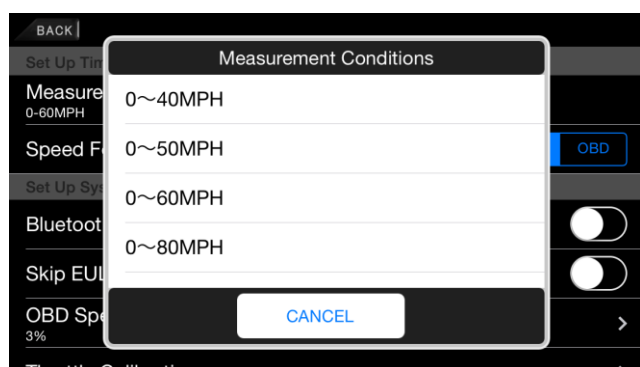
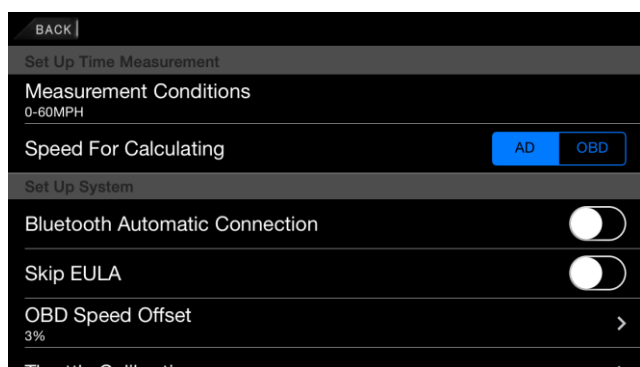
- 『Transmission Gear Position』 : Swiping the toggle button, the current transmission gear position can be displayed on the REV Indicator
- 『Transmission gear position Range』 : Set up Maximum Transmission
- 『Speed Calculation Offset』 : Input your speed at 2000rpm at each transmission position.  
By doing so, the transmission position is displayed accurately.
- 『Speed Calculation/Revolutions』 : You can select data either from the ADVANCE Control Unit or OBD II in order to calculate Speed Offset.

Toggle button



【Set Up Time Measurement】 Touch the MENU button on the screen→“Settings”→

- 『Measurement Conditions』: Select Time Measurement Mode as below  
0-60km/h、0-80km/h、0-100km/h、0-120km/h、0-160km/h  
0-200 km/h、0-240 km/h、0-300km/h  
(0-40MPH、0-50MPH、0-60MPH、0-80MPH、0-100MPH、0-120MPH、0-160MPH、0-200MPH)
- 『Speed Calculation』 : You can select speed/rpm data either from the ADVANCE Control Unit or OBD II when you calculate your time.

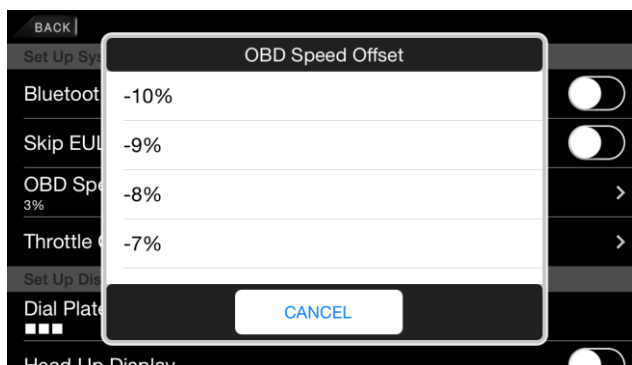


【Set Up System】 Touch the MENU button on the screen→“Settings”→

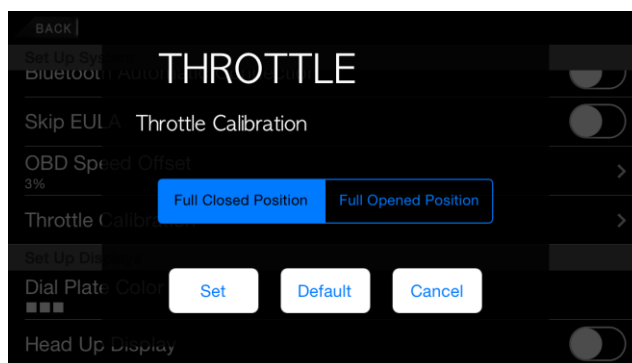
『Automatic connections』 : Swiping the toggle button, in the case of breaking a connection between Bluetooth and the SMART ADAPTER W, its communication automatically reconnects .

『Skip EULA』 : Swiping the toggle button, “End User License Agreement” will be skipped every time you open the App.

『OBd speed offset』 : This function is available when connecting to OBd II  
You can adjust value of your speed from OBd II  
Range -10%~+10%  
Default 3%

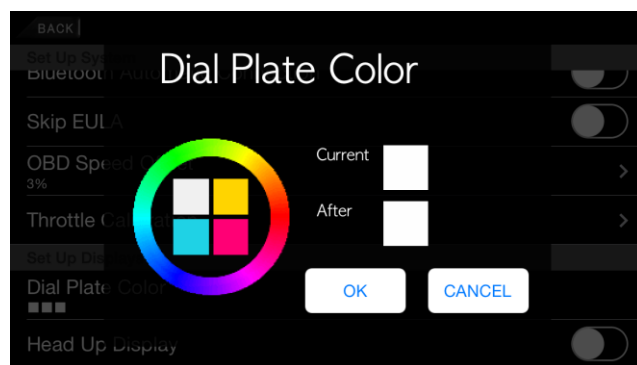
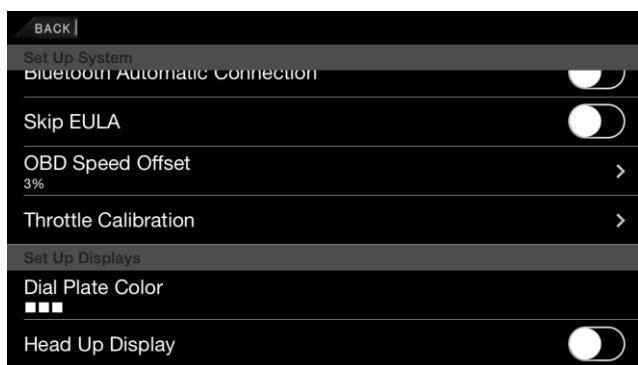


『Throttle Calibration』 : This function is available when connecting to OBd II  
Select full closed position : 0%  
Select full opened position: 100%  
Select default : original value from OBd is displayed without calibration



【Set Up Displays】 Touch the MENU button on the screen→“Settings”→

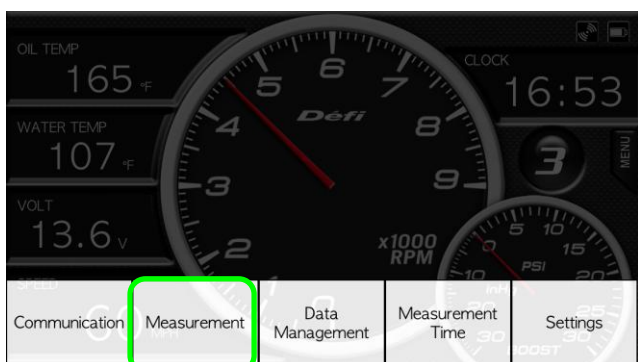
『Dial Plate Color』 : You have many color options. You can choose WHITE, PINK, AQUA, and YELLOW by touching one of the four squares or by sliding your finger around the circle you can choose a variety of colors.



『HUD Display』 : Swiping the toggle button, gauge illustration on the screen will turn to the inverted mirror image for Head Up Display. During nights, you can reflect it on your windshield.



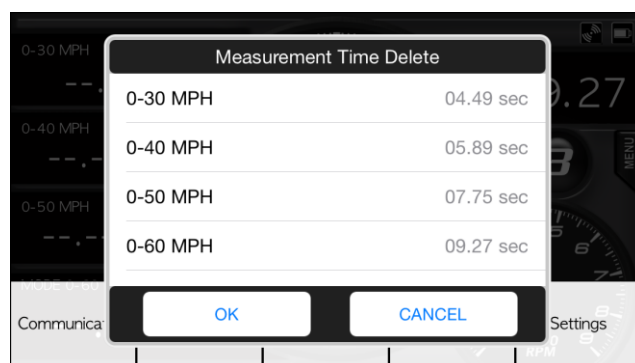
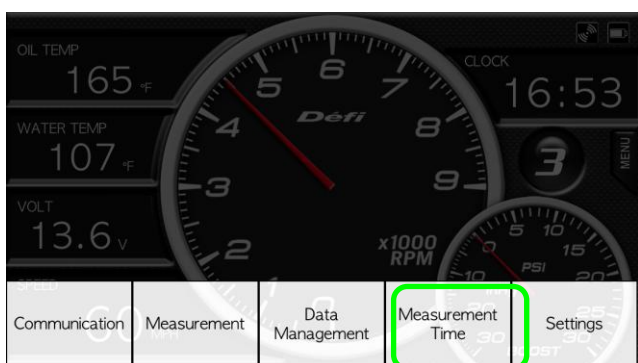
【Time Measurement Settings】 Touch the MENU button (Time Measurement Mode) on the screen→“Measurement”



After you stop your vehicle completely, please touch “Measurement”, and then “Ready” message will appear. The time measurement will start automatically when your vehicle is in motion. Once you reach your set speed, the measurement will be stopped automatically.

NOTE: If you touch “Measurement” during driving, “Ready” message does not appear. Once you stop your vehicle, it will appear on the screen.

【Delete the Measurement Time】 Touch the MENU button (Time Measurement Mode) on the screen→“Delete Measurement Time”



The best time is recorded on each measurement condition. Touching the item you want to delete on the list, the check mark appears on the right side, and then touch “OK”.

【Display of the Stored Data】 Touch the MENU button (Time Measurement Mode) on the screen→“Data Management”



BACK   When deleting, please slide the selected item left.		
Date	Mode	Time
2014/09/08 16:40:14	0-60MPH	09.27sec

BACK   When deleting, please slide the selected item left.			
Date	Mode	Time	
/08 16:40:14	0-60MPH	09.27sec	Delete

Touching “Data Management”, your previous data appears as a list form and you can load the data by touching. Swiping the item on the list, with a left motion, “DELETE” message will appear. Touching it, the data will be completely deleted.